

NOTE:
DIMENSIONS IN [] ARE ENGLISH STANDARD EQUIVALENTS
*ADDITIONAL DUAL FUEL INLETS ARE ONLY USED IN CONJUNCTION WITH DUAL FUEL AUTO CHANGEOVER KIT.

REV	DATE	CHANGE NUMBER	ON COMPOSITE DWGS, SEE PART NO. FOR REVISION LEVEL □ INDICATES PART NUMBERS AFFECTED BY LATEST DRAWING REVISION	BY
C	02NOV2022	CT223403	(B-7) "OPTIONAL RIGHT SIDE FUEL INLET 1" NPT" NOTE ADDED; (B-6) DIM. 1170 & 52 ADDED; (B-1)"LPG FUEL INLET* 1" NPT" WAS " DUAL FUEL INLET 2* 1" NPT"; (A-1) "NG FUEL INLET* 1" NPT" WAS " DUAL FUEL INLET 1* 1" NPT"; (D-3, A-7) OPTIONAL E-STOP KIT LOCATION & NOTE ADDED; SEE SHEET 2	NCD

UNLESS OTHERWISE SPECIFIED:
ALL DIMENSIONS IN MILLIMETERS
GENERAL TOLERANCES:
XX ± 0.25
X ± 1.0
X ± 1.5
ANGLES ± 0°30'

THIRD ANGLE PROJECTION

MAJOR ○ = 0
CRITICAL ⊙ = 0
CHARACTERISTICS COMPLY WITH KPS-50022

DRAWN BY RVM DATE:
APPROVED TAS DATE: 27JAN2021
BY

DO NOT SCALE.
THIS ASSEMBLY OR PART MUST COMPLY WITH PEP-RML-001.
REFERENCE CAD MODEL FOR UNSPECIFIED DIMENSIONS.

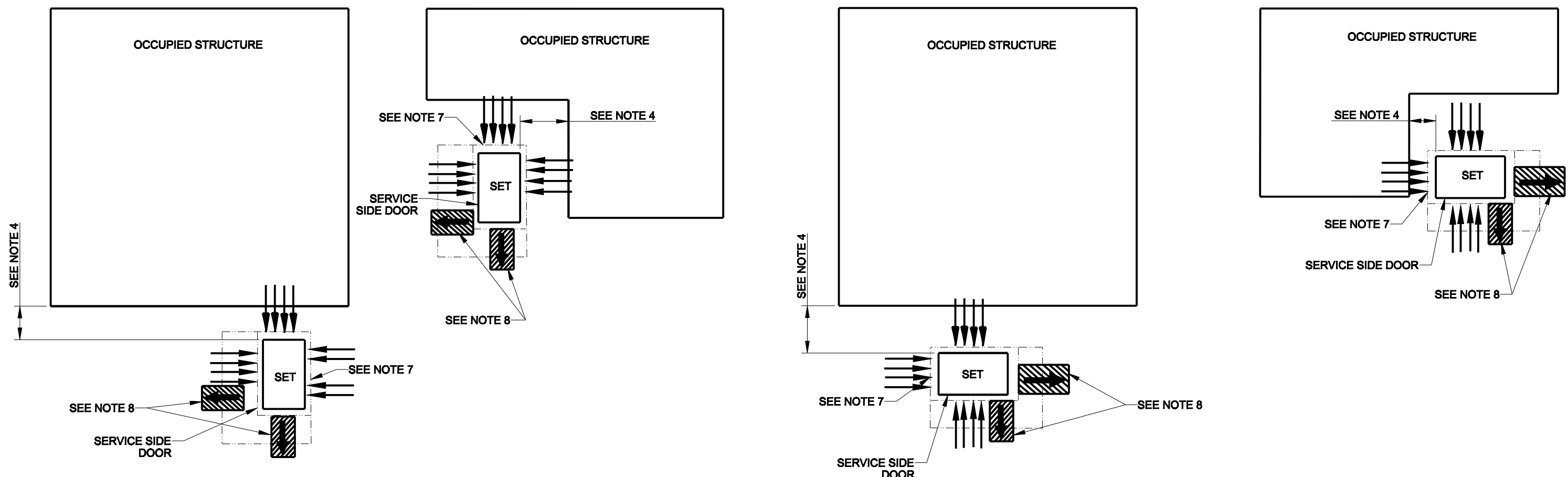
KOHLER.
KOHLER, WISCONSIN 53044

SCALE: 0.050 SHEET SIZE: B SHEET 1 OF 2

TITLE:
**DIMENSION PRINT,
48RCLC/60RCLB**

DWG NO.: **ADV-9760**

48 RCLC / 60 RCLB



INSTALLATION GUIDELINES

- 1) EXHAUST IS AIMED AWAY FROM OR PARALLEL TO THE STRUCTURE.
- 2) EXHAUST IS NOT DIRECTED AT PLAY AREAS, PATIOS OR OTHER AREAS WHERE PEOPLE CONGREGATE.
- 3) THE NEAREST WINDOW, VENT, DOOR OR SIMILAR STRUCTURE OPENING IS AT LEAST 5 FEET FROM THE EXHAUST END OF THE GENERATOR.
- 4) GENERATOR SET MUST BE INSTALLED A MINIMUM OF 18 INCHES FROM STRUCTURE PER NFPA 37, HOWEVER, ACTUAL DISTANCE MAY DIFFER BASED ON STATE AND LOCAL CODES.
- 5) WINDOWS & DOORS ON ADJACENT WALLS ARE CLOSED.
- 6) FURNACE AND OTHER SIMILAR INTAKES ARE AT LEAST 10 FEET FROM EXHAUST END OF GENERATOR.
- 7) 4" THICK CONCRETE PAD EXTENDING 6" BEYOND GENSET ON ALL SIDES.
- 8) NO PLANTS, SHRUBS OR OTHER COMBUSTIBLES ALLOWED IN CLEARANCE AREA. (MINIMUM 4 FT. FROM EXHAUST END).
- 9) SENSITIVE PLANTS, PATIO FURNITURE, ETC. ARE AT LEAST 8 FEET FROM EXHAUST END OF SET.
- 10) REFER TO OWNERS MANUAL FOR OTHER INSTALLATION CONSTRAINTS.
- 11) RECOMMENDED SKID ANCHOR - 1/2" HILTI KWIK BOLT TZ CARBON STEEL WEDGE ANCHOR WITH STANDARD WASHER

REV	DATE	CHANGE NUMBER	ON COMPOSITE DWGS, SEE PART NO. FOR REVISION LEVEL □ INDICATES PART NUMBERS AFFECTED BY LATEST DRAWING REVISION	BY
-	27JAN2021	CT209473	NEW DRAWING	RVM
A	23JUL2021	CT213532	SEE SHEET 1	RVM
B	28SEP2022	CT221726	(A-7) NOTE 8: 4FT WAS 8FT	AAS
C	02NOV2022	CT223403	(A-8) NOTE 11 ADDED; SEE SHEET 1	NCD

UNLESS OTHERWISE SPECIFIED:
 ALL DIMENSIONS IN MILLIMETERS
 GENERAL TOLERANCES:
 XX ± 0.25
 X.X ± 1.0
 X ± 1.5
 ANGLES ± 0°30'

THIRD ANGLE PROJECTION

MAJOR ○ = 0
 CRITICAL ⊗ = 0
 CHARACTERISTICS COMPLY WITH
 KPS-50022

DRAWN BY RVM DATE: 27JAN2021
 APPROVED BY TAS

DO NOT SCALE.
 THIS ASSEMBLY OR PART MUST COMPLY WITH PEP-RML-001. REFERENCE CAD MODEL FOR UNSPECIFIED DIMENSIONS.

KOHLER.
 KOHLER, WISCONSIN 53044

SCALE: 0.050 SHEET SIZE: B SHEET 2 OF 2

TITLE:
**DIMENSION PRINT,
 48RCLC/60RCLB**

DWG NO.: **ADV-9760**

48 RCLC / 60 RCLB